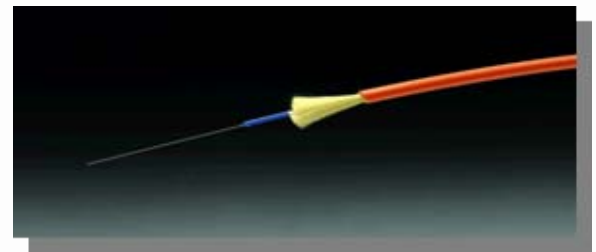


Hwadee 华迪实训

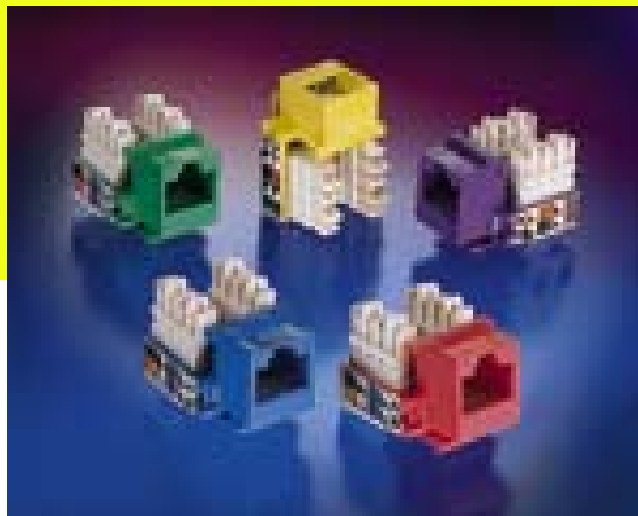


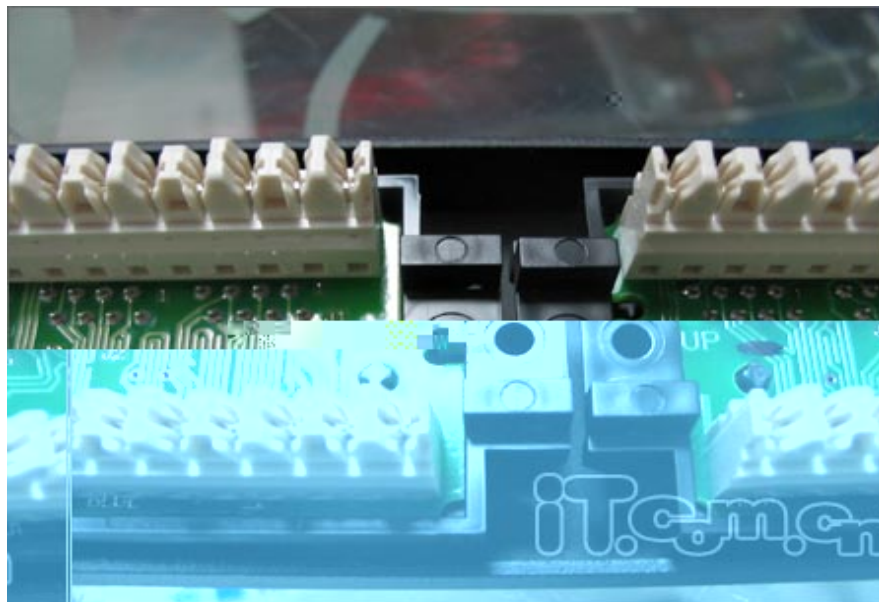
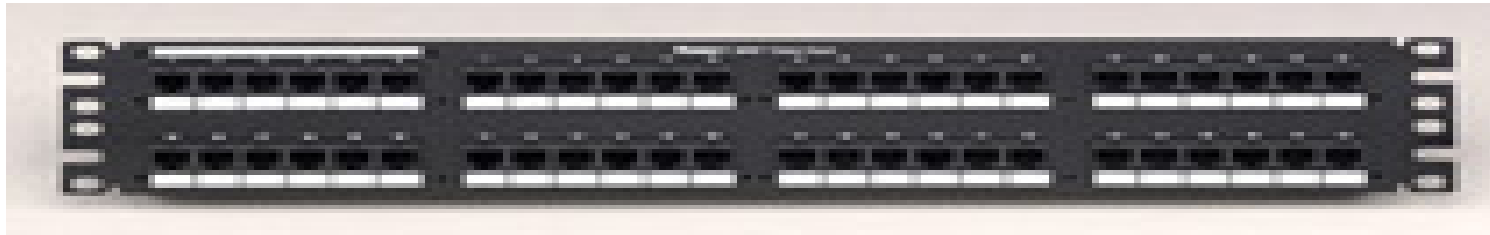
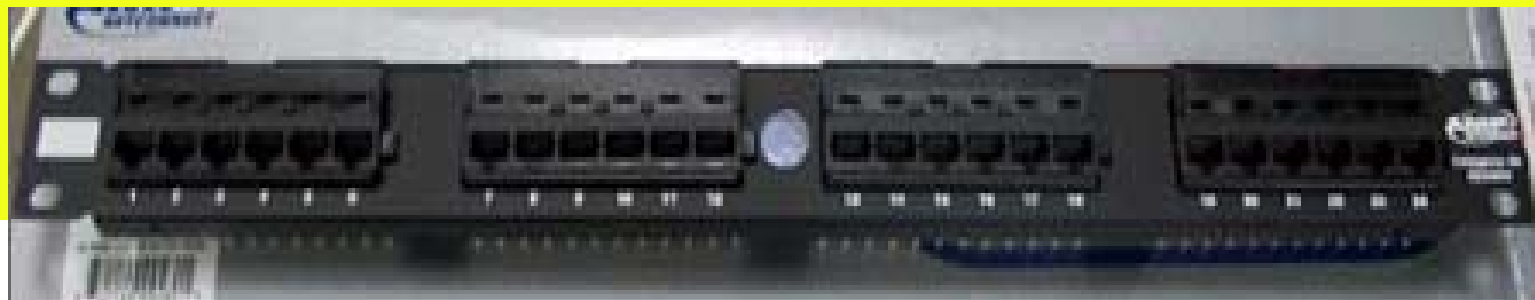


RJ45

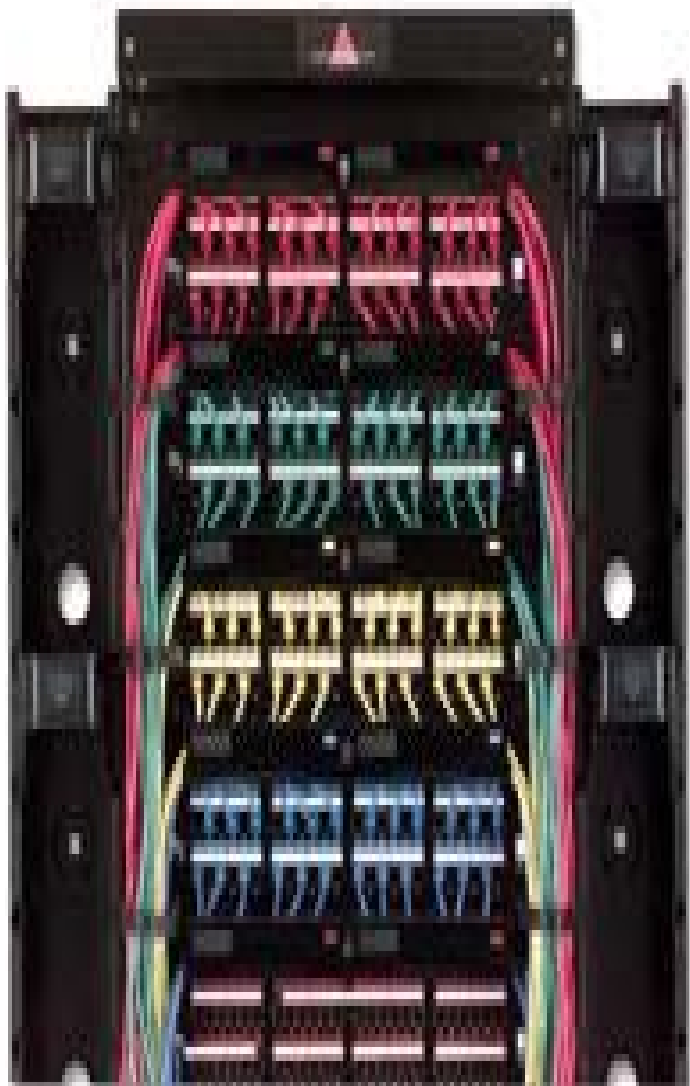


RJ11





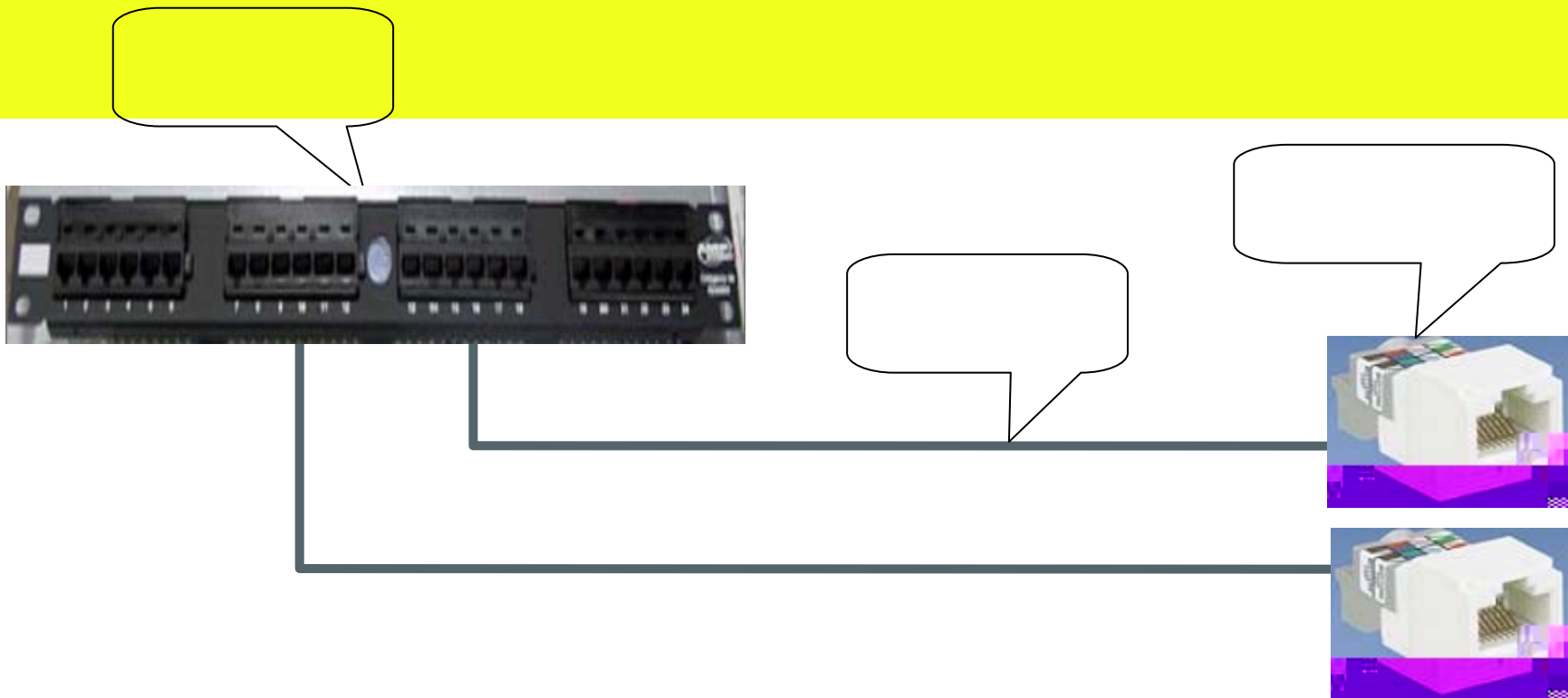






I/O

IDF

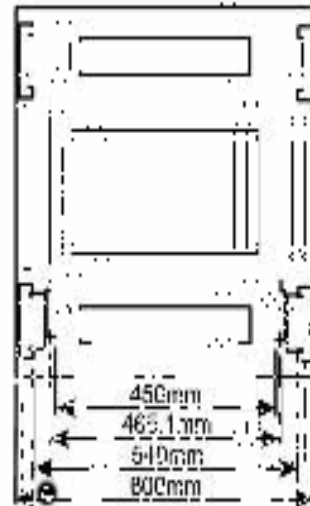
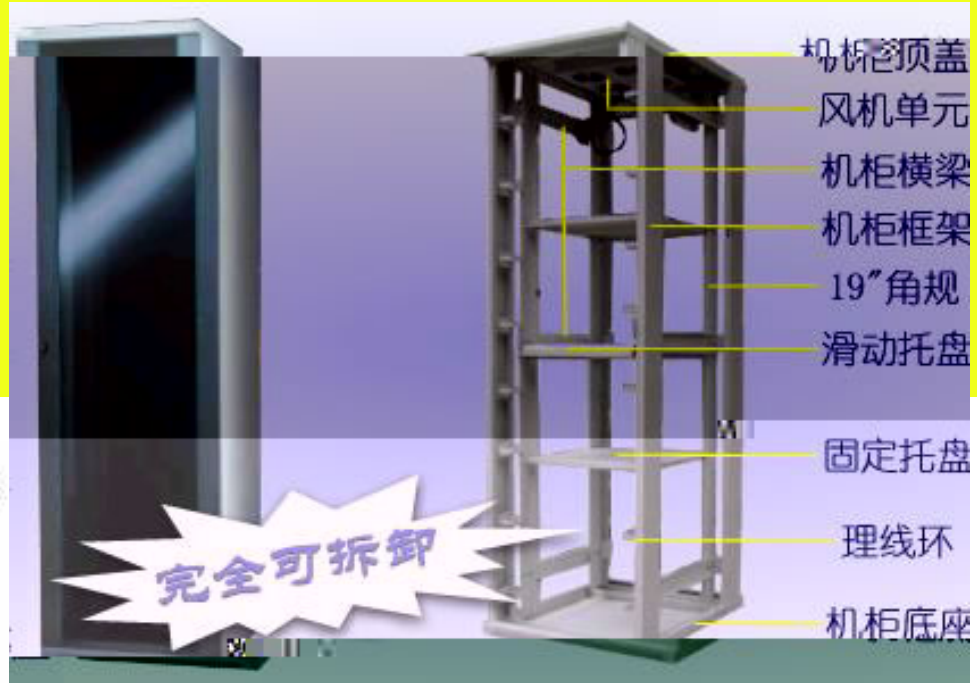




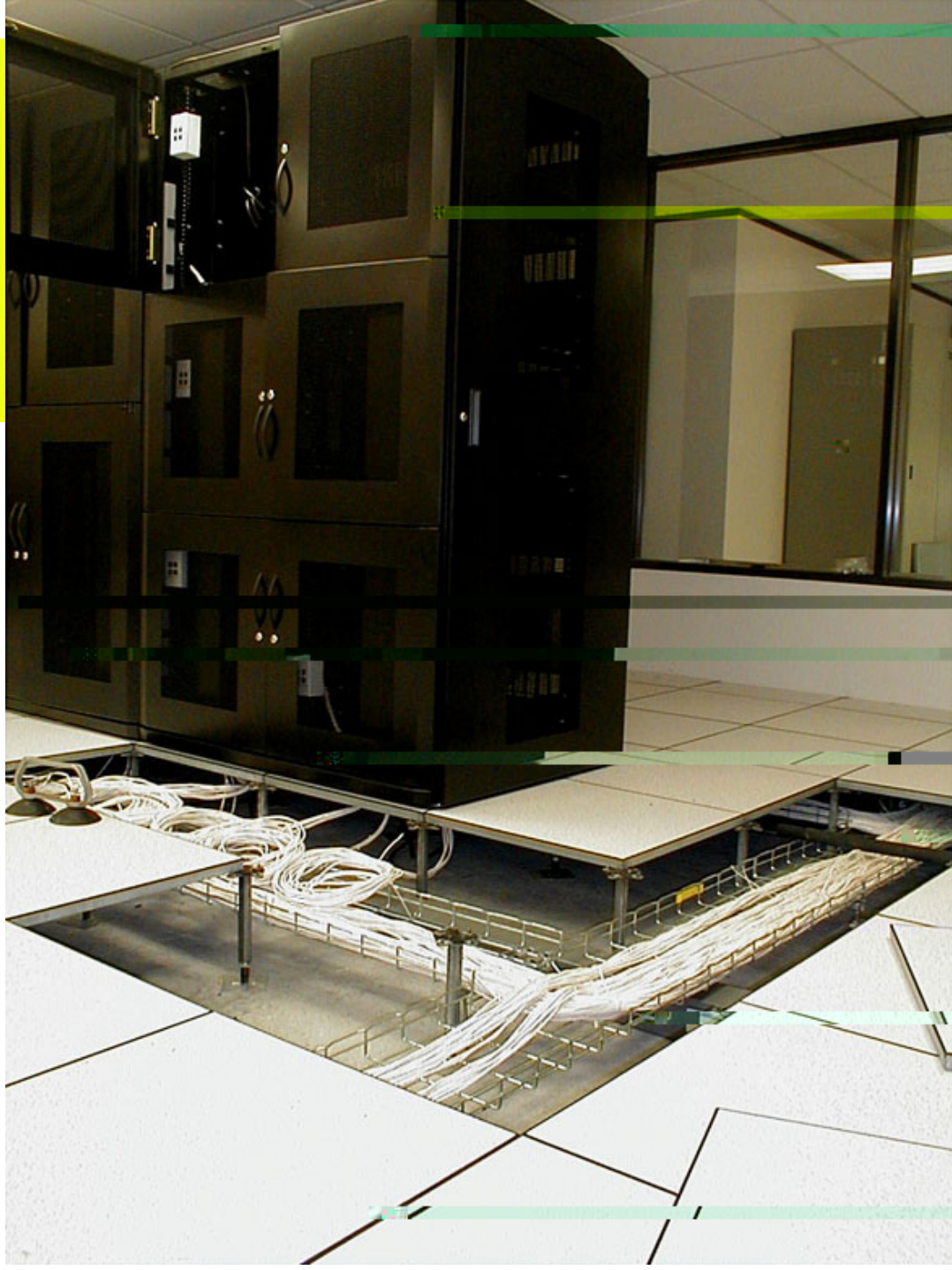
PVC



FLUCK-LT



- 20U — 1000mm
- 22U — 1200mm
- 32U — 1600mm
- 37U — 1800mm
- 42U — 2000mm



10um

.

- 1
- 2
- 3
- 4

120km)

2.56Tb/S)

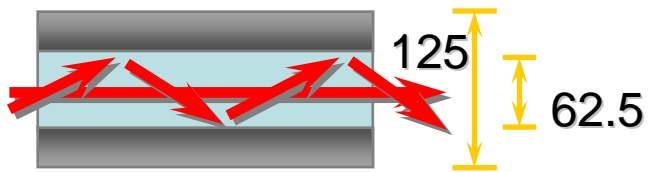
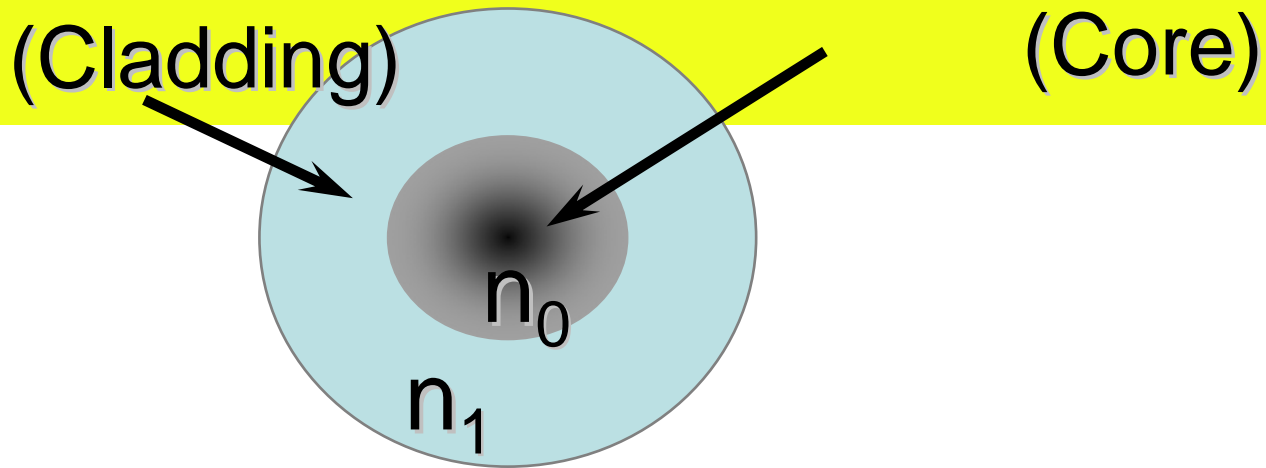
800nm 900nm

1250nm 1350nm

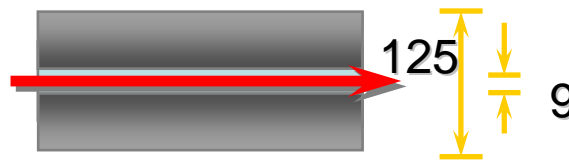
1500nm 1600nm

850nm 1300nm,

1310nm 1550nm



(Multimode)



(Single-mode)

(Single-Mode SMF)

1310nm 1550nm

8/125um, 9/125um, 10/125um

(Multi-Mode, MMF)

(850nm/1300nm)

50/125um, 62.5/125um

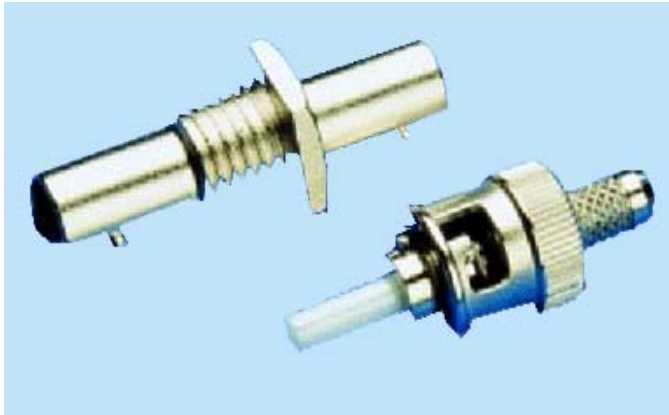
100/140um, 200/230um.



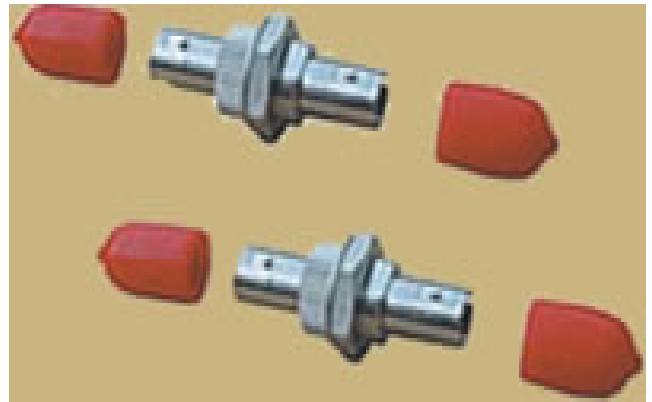
SC



SC



ST

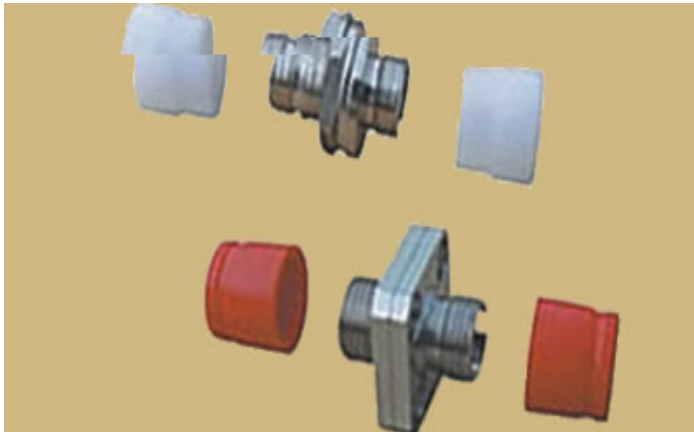


ST

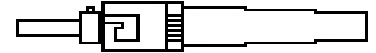
FC



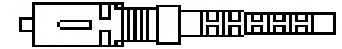
FC



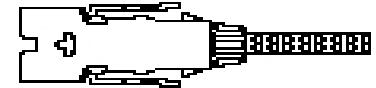
ST



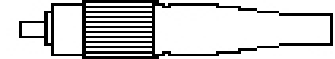
SC



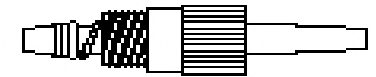
FDDI



FC



BICONIC



ESCON



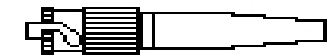
SMA905



SMA906



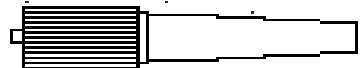
MINI
BNC



MTR L



D4

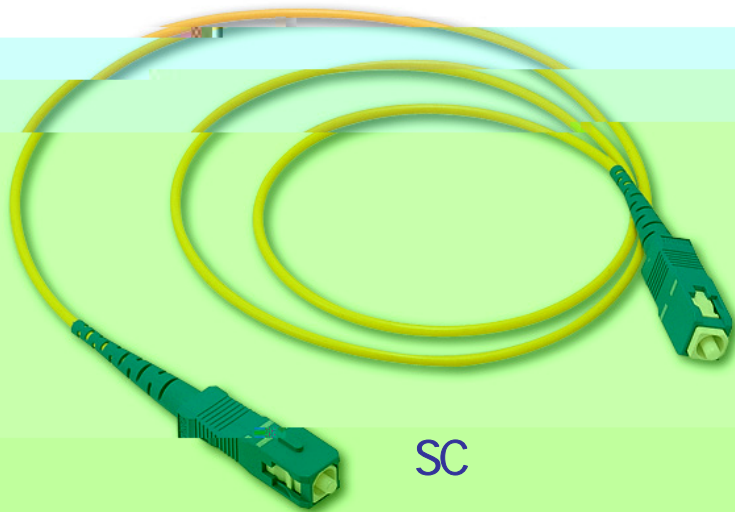


VF-45



OPTI-
JACK

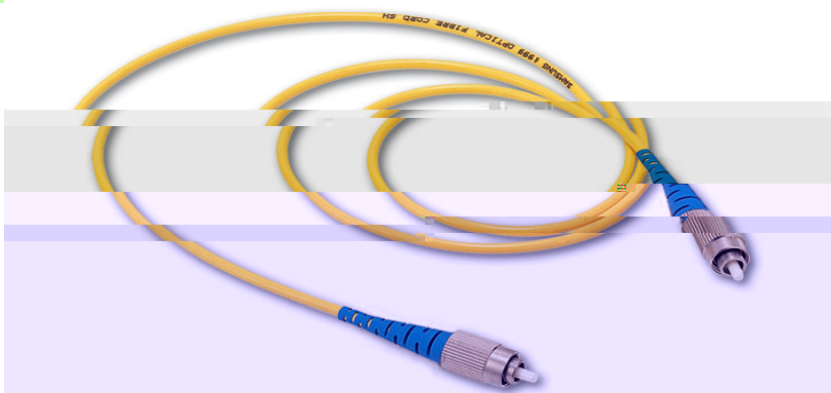




SC



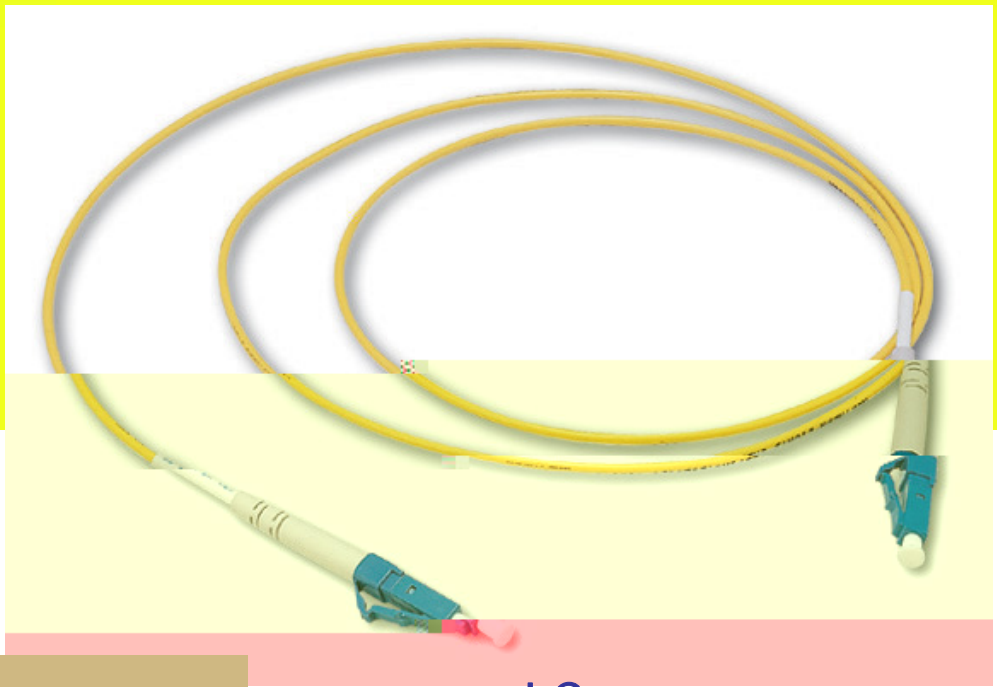
ST



FC



M-RJ



LC



LC

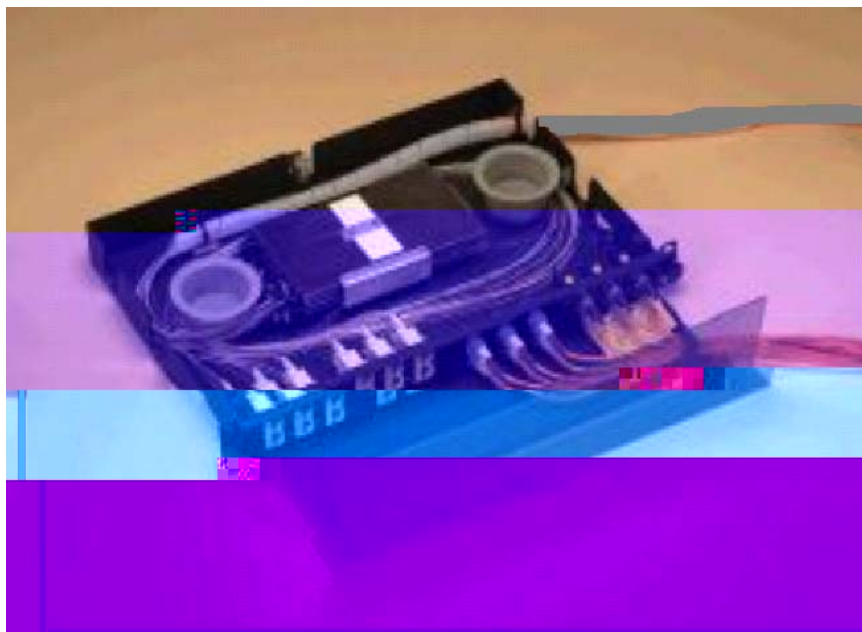
SFP

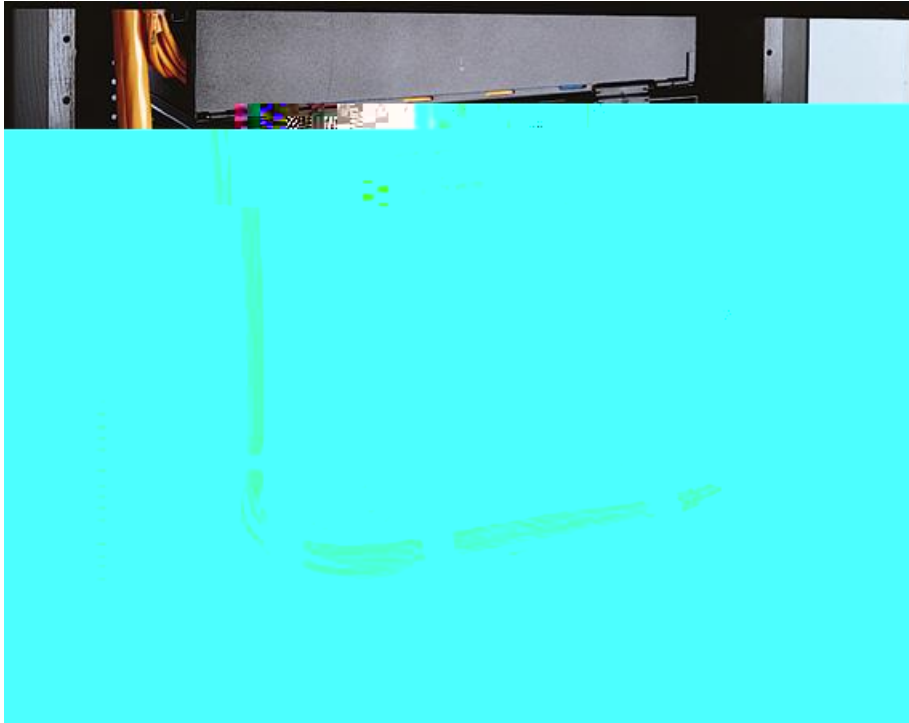


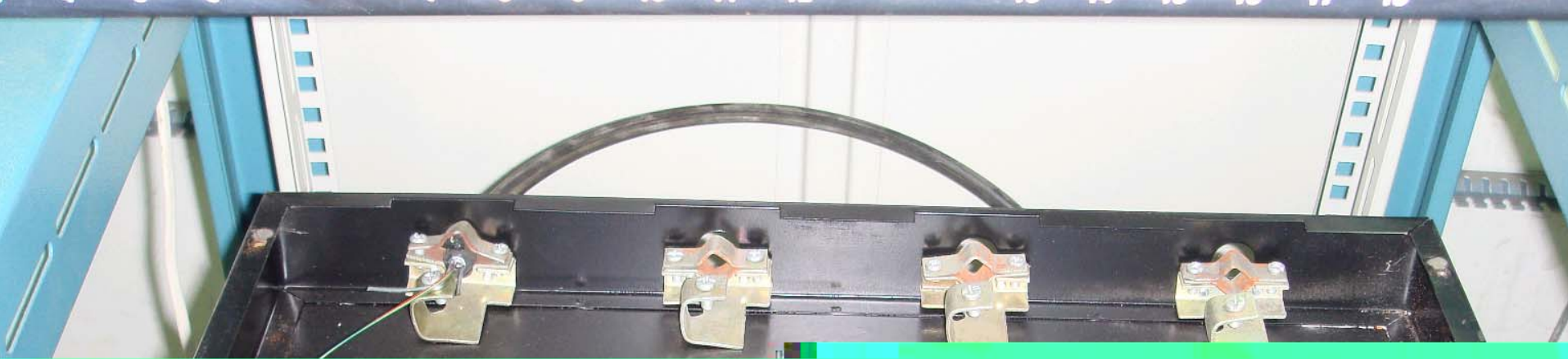


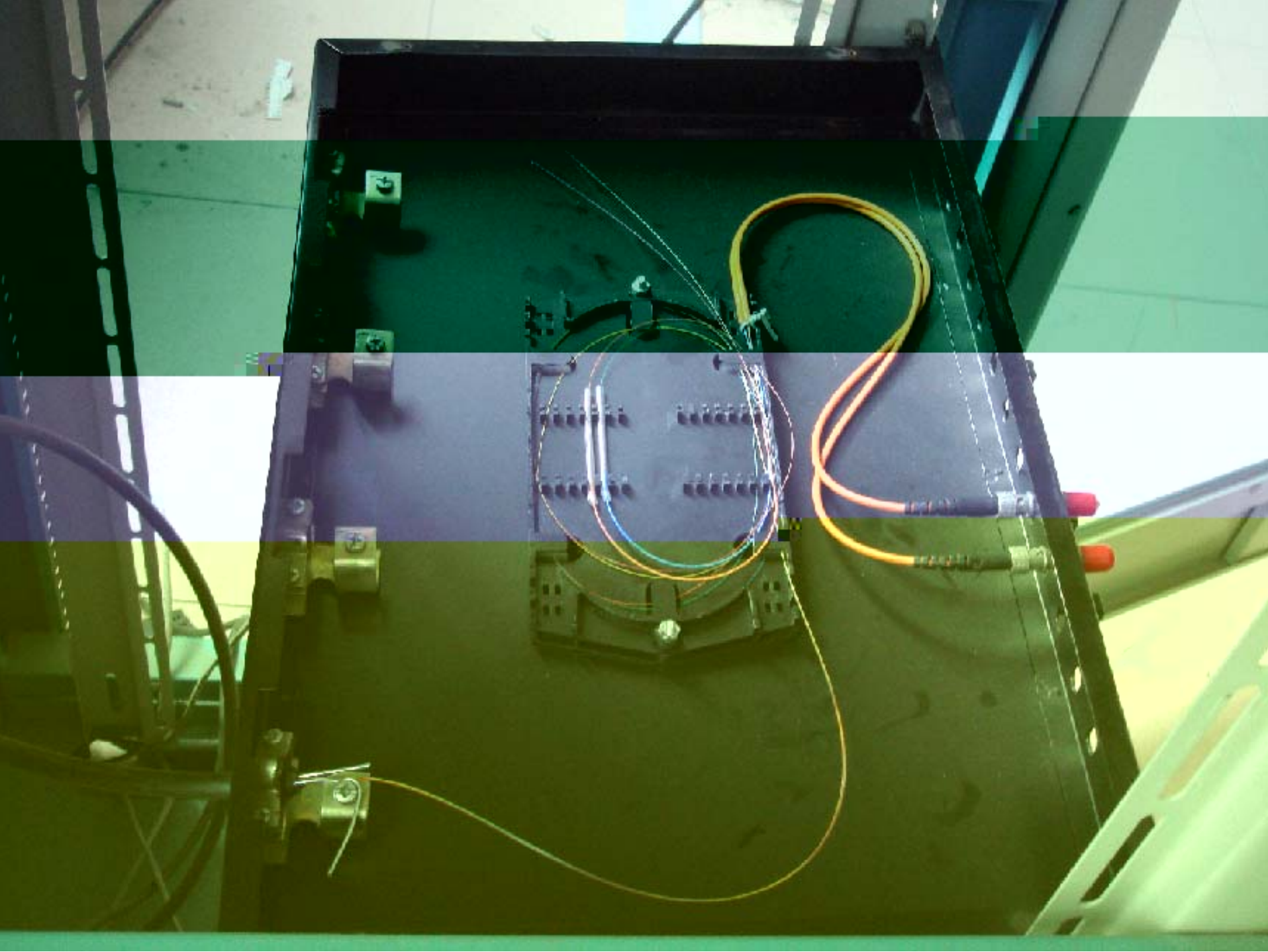


/

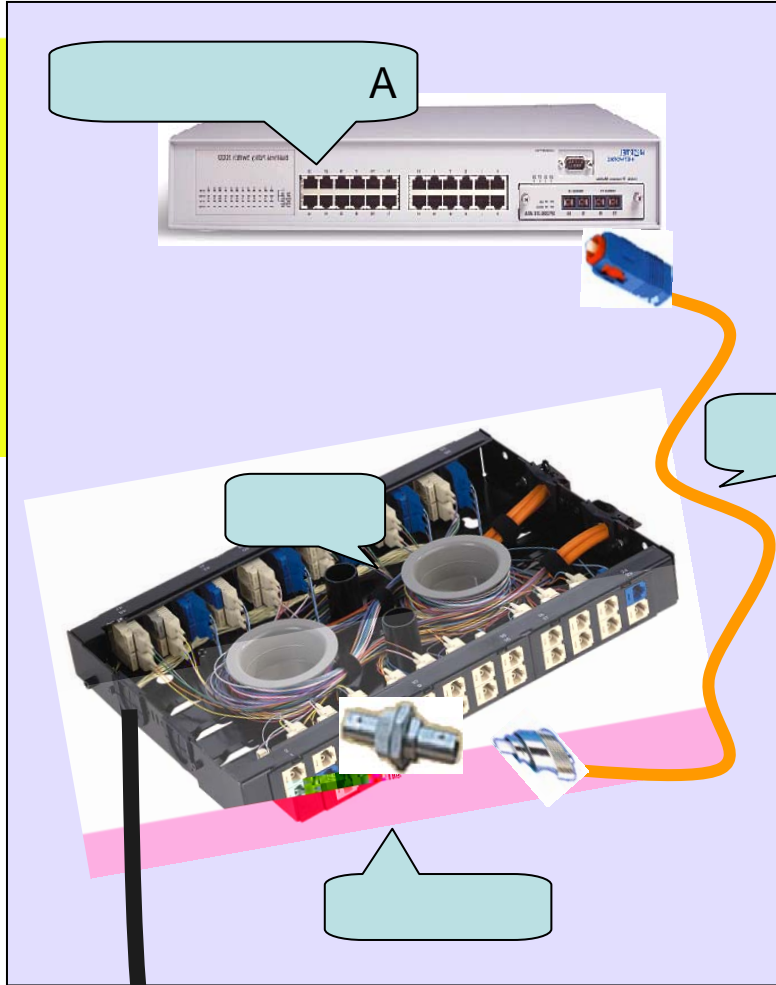




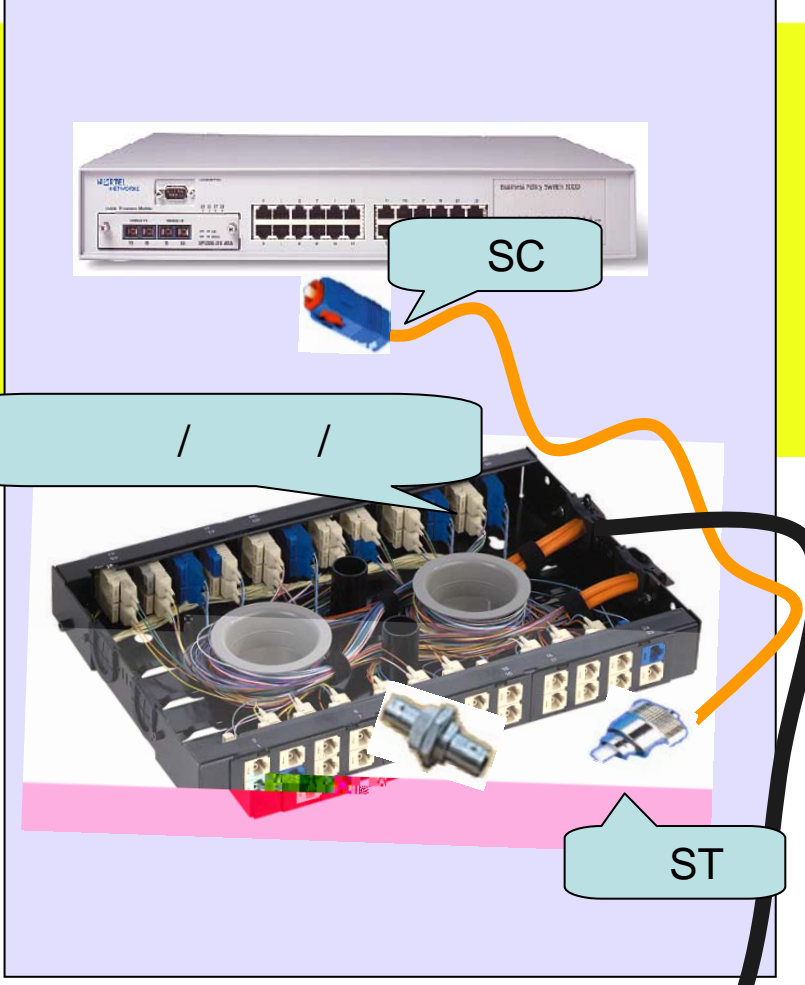








A



B

ST

/

A

B

2



