

Test Report

No. SHAEC17132 1 3

te 27 2 17

e 1 o

SHAN HA R CHEN E ECTR N CSC .

NSHEN N STRA AREA HE N EN AN SHAN HA

T e o o s p e s s e r e s t t e e t e o e o t e e t s s E

S S o No. S 17 222 3 SH

te o S p e R e e e 23 2 17

Test e r o 23 2 17 27 2 17

Test R e e s t e S e e t e t e s t s s r e e s t e e t .

Test e t o e s e r e r t o e t p e s .

Test R e s t s e s e r e r t o e t p e s .

C o s o s e o t e p e r o r e t e s t s o s t t e s p e s t e r e s t s o C
e e r r H e e t r o o r o t e p e s s
o r o t e p e e t e r s E s o t e e e t e t s s e t
RoHS r e t e E 2 1 3 e A e t o r e t e 2 1 1 E .

Mary Ma

rr

Appro e S tor



Unless otherwise agreed in writing, this document is issued by the Company subject to its General Conditions of Service printed overleaf, available on request or accessible at <http://www.sgs.com/en/Terms-and-Conditions.aspx> and, for electronic format documents, subject to Terms and Conditions for Electronic Documents at <http://www.sgs.com/en/Terms-and-Conditions/Terms-e-Documents.aspx>. Attention is drawn to the limitation of liability, indemnification and jurisdiction issues defined therein. Any holder of this document is advised that information contained hereon reflects the Company's findings at the time of its intervention only and within the limits of Client's instructions, if any. The Company's sole responsibility is to its Client and this document does not exonerate parties to a transaction from exercising all their rights and obligations under the transaction documents. This document cannot be reproduced except in full, without prior written approval of the Company. Any unauthorized alteration, forgery or falsification of the content or appearance of this document is unlawful and offenders may be prosecuted to the fullest extent of the law. Unless otherwise stated the results shown in this test report refer only to the sample(s) tested.

Attention: To check the authenticity of testing / inspection report & certificate, please contact us at telephone: (86-755) 8307 1443, or email: CN.Doccheck@sgs.com

SGS-CSTC (Shanghai) Technical Services (Shanghai) Co., Ltd.
Testing Center - Client Laboratory

13th Building, No. 889 Yishan Road Xuhui District, Shanghai China 200233
中国·上海·徐汇区宜山路889号3号楼 邮编: 200233

t E&E (86-21) 61402553 f E&E (86-21) 64953679 www.sgs.com.cn
t HL (86-21) 61402594 f HL (86-21) 61156899 e sgs.china@sgs.com

Test Report

No. SHAEC17132 1 3

te 27 2 17

e 2 o

Test Res ts

Test rt es rpto

Spe e No. S S S pe es rpto
 SN1 SHA17 132 1 . 3 te so pe et

Re r s
 1 1 . 1
 2 et o | ete to t
 3 N Not ete te
 Not Re te

RoHS re t e F 2 1 3 e A e to re t e 2 1 1 E

Test et o 1 re ere e to EC 2321 2 13 to o C C ES.
 2 re ere 2321 2 13 to o e C ES.
 3 t re ere 2321 2 13 eter to o er r C ES.
 t re ere 2321 7 2 2 17 eter to o He e t C ro Co or et r
 et o s or t re ere e to EC 2321 2 13 eter to o C ro
 C ES.
 t re ere EC 2321 2 1 to o s Es C S.

Test te s	t	t		3
C C	1		2	N
e	1		2	N
er r H	1		2	N
He e t C ro Cr	1			N
S o s	1			N
o o ro o pe				N
ro o pe				N
Tr ro o pe				N
Tetr ro o pe				N
e t ro o pe				N
He ro o pe				N
Hept ro o pe				N
t ro o pe				N
No ro o pe				N
e ro o pe				N
S o Es	1			N



Unless otherwise agreed in writing, this document is issued by the Company subject to its General Conditions of Service printed overleaf, available on request or accessible at <http://www.sgs.com/en/Terms-and-Conditions.aspx> and, for electronic format documents, subject to Terms and Conditions for Electronic Documents at <http://www.sgs.com/en/Terms-and-Conditions/Terms-e-Documents.aspx>. Attention is drawn to the limitation of liability, indemnification and jurisdiction issues defined therein. Any holder of this document is advised that information contained hereon reflects the Company's findings at the time of its intervention only and within the limits of Client's instructions, if any. The Company's sole responsibility is to its Client and this document does not exonerate parties to a transaction from exercising all their rights and obligations under the transaction documents. This document cannot be reproduced except in full, without prior written approval of the Company. Any unauthorized alteration, forgery or falsification of the content or appearance of this document is unlawful and offenders may be prosecuted to the fullest extent of the law. Unless otherwise stated the results shown in this test report refer only to the sample(s) tested.

Attention: To check the authenticity of testing / inspection report & certificate, please contact us at telephone: (86-755) 8307 1443, or email: CN.Doccheck@sgs.com
 13th Building, No. 889 Yishan Road Xuhui District, Shanghai China 200233 t E&E (86-21) 61402553 f E&E (86-21) 64953679 www.sgs.com.cn
 中国·上海·徐汇区宜山路889号3号楼 邮编: 200233 t HL (86-21) 61402594 f HL (86-21) 61156899 e sgs.china@sgs.com

Test Report

No. SHAEC17132 1 3 te 27 2 17 e 3 o

Test items	Result
Orthoformaldehyde	N
Formaldehyde	N
Triformaldehyde	N
Tetraformaldehyde	N
Hexaformaldehyde	N
Heptaformaldehyde	N
Octaformaldehyde	N
No. formic acid	N
Formic acid	N

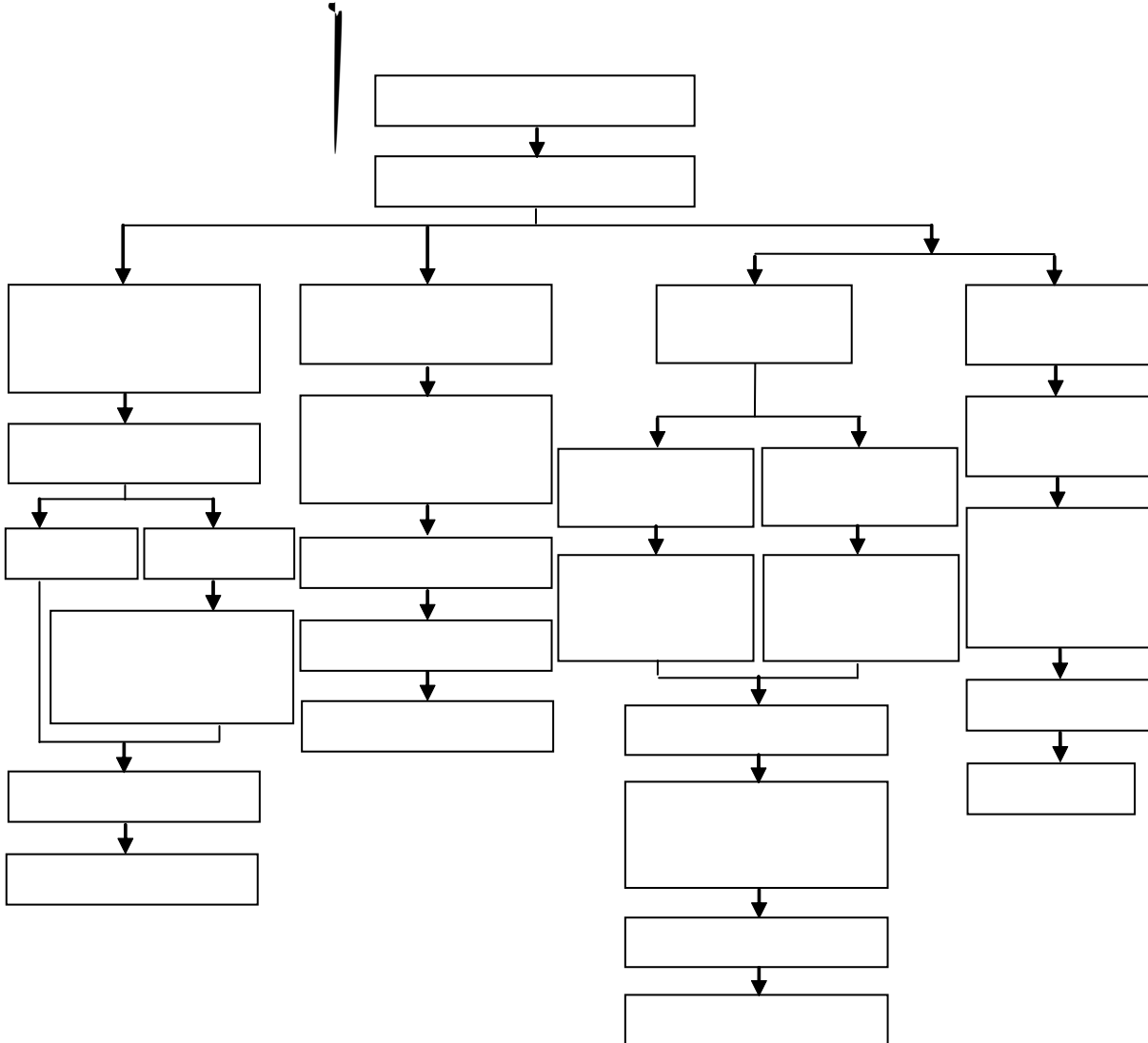
Notes

1 The per se test for RoHS reference E 2 1 3.
 EC 2321 series set to EN 2321 series
 . e e e e 1 3 17 2232 7 3 11 1 R S AN
 2 372
 res to He etC Cr see e to e N s et eres to tot ro
 ts N so test o He etC ro Cr s ot re re .
 teC ro Cr o te ts re tert te o He etC ro Cr o r to
 test o He etC ro Cr s re re .
 e 2 1 Co sso re te E 2 1 3 sp se te o r o te
 E rope o E to et e pt EH to ANNE o te Ro s
 Re st re te Te e restr tse te to o ore t .1 e o o e eo s
 ter o ee tr pro t.
 T e restr to o EH s pp to e e es tro e
 e es o tor o tro str e ts str o tor o tro str e ts
 ro 22 2 21.
 T e restr to o EH s ot pp to es or sp rep rts or t e rep r
 t e re se t e p t o to tes or pr o p t o EEE p e o t e r et e ore 22
 2 1 o e e es tro e e es o tor o tro
 str e ts str o tor o tro str e ts p e o t e r et e ore 22
 2 21.
 7 T e restr to o EH s ot pp to to s re re s e t to e
 restr to o EH t ro e tr 1 o A e to Re to EC No 1 7 2 .



Unless otherwise agreed in writing, this document is issued by the Company subject to its General Conditions of Service printed overleaf, available on request or accessible at <http://www.sgs.com/en/Terms-and-Conditions.aspx> and, for electronic format documents, subject to Terms and Conditions for Electronic Documents at <http://www.sgs.com/en/Terms-and-Conditions/Terms-e-Documents.aspx>. Attention is drawn to the limitation of liability, indemnification and jurisdiction issues defined therein. Any holder of this document is advised that information contained hereon reflects the Company's findings at the time of its intervention only and within the limits of Client's instructions, if any. The Company's sole responsibility is to its Client and this document does not exonerate parties to a transaction from exercising all their rights and obligations under the transaction documents. This document cannot be reproduced except in full, without prior written approval of the Company. Any unauthorized alteration, forgery or falsification of the content or appearance of this document is unlawful and offenders may be prosecuted to the fullest extent of the law. Unless otherwise stated the results shown in this test report refer only to the sample(s) tested.

Attention: To check the authenticity of testing / inspection report & certificate, please contact us at telephone: (86-755) 8307 1443, or email: CN.Doccheck@sgs.com



Unless otherwise agreed in writing, this document is issued by the Company subject to its General Conditions of Service printed overleaf, available on request or accessible at <http://www.sgs.com/en/Terms-and-Conditions.aspx> and, for electronic format documents, subject to Terms and Conditions for Electronic Documents at <http://www.sgs.com/en/Terms-and-Conditions/Terms-e-Document.aspx>. Attention is drawn to the limitation of liability, indemnification and jurisdiction issues defined therein. Any holder of this document is advised that information contained hereon reflects the Company's findings at the time of its intervention only and within the limits of Client's instructions, if any. The Company's sole responsibility is to its Client and this document does not exonerate parties to a transaction from exercising all their rights and obligations under the transaction documents. This document cannot be reproduced except in full, without prior written approval of the Company. Any unauthorized alteration, forgery or falsification of the content or appearance of this document is unlawful and offenders may be prosecuted to the fullest extent of the law. Unless otherwise stated the results shown in this test report refer only to the sample(s) tested.

Attention: To check the authenticity of testing / inspection report & certificate, please contact us at telephone: (86-755) 8307 1443, or email: CN.Doccheck@sgs.com

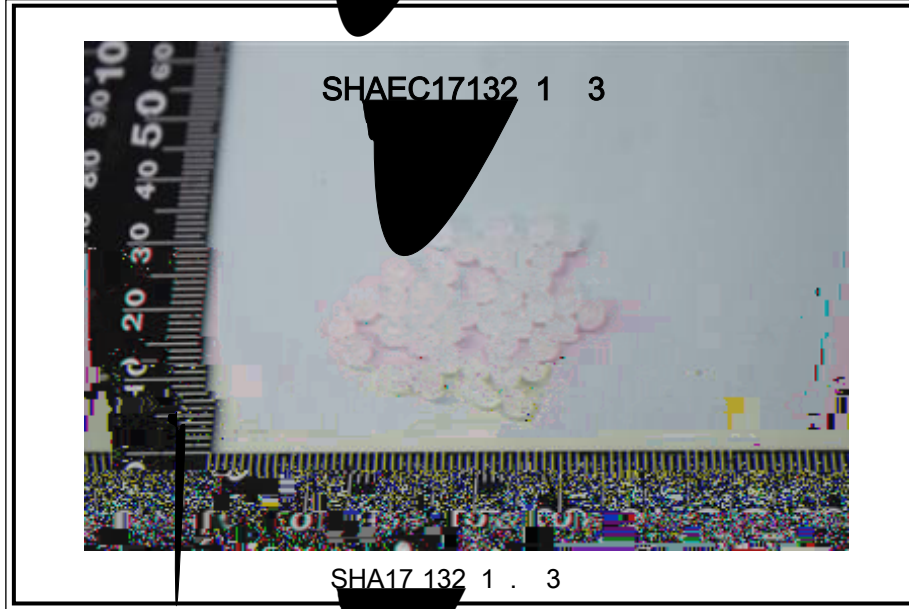
Test Report

No. SHAEC17132 1 3

te 27 2 17

e o

S p e p o t o



S S t e t t e p h o t o o r r e p o r t o

E o R e p o r t



Unless otherwise agreed in writing, this document is issued by the Company subject to its General Conditions of Service printed overleaf, available on request or accessible at <http://www.sgs.com/en/Terms-and-Conditions.aspx> and, for electronic format documents, subject to Terms and Conditions for Electronic Documents at <http://www.sgs.com/en/Terms-and-Conditions/Terms-e-Documents.aspx>. Attention is drawn to the limitation of liability, indemnification and jurisdiction issues defined therein. Any holder of this document is advised that information contained hereon reflects the Company's findings at the time of its intervention only and within the limits of Client's instructions, if any. The Company's sole responsibility is to its Client and this document does not exonerate parties to a transaction from exercising all their rights and obligations under the transaction documents. This document cannot be reproduced except in full, without prior written approval of the Company. Any unauthorized alteration, forgery or falsification of the content or appearance of this document is unlawful and offenders may be prosecuted to the fullest extent of the law. Unless otherwise stated the results shown in this test report refer only to the sample(s) tested.

Attention: To check the authenticity of testing / inspection report & certificate, please contact us at telephone: (86-755) 8307 1443, or email: CN.Doccheck@sgs.com

SGS-CSTC Shanghai Technical Services (Shanghai) Co., Ltd.
Testing Center-Chemical Laboratory

13th Building, No. 889 Yishan Road Xuhui District, Shanghai China 200233
中国·上海·徐汇区宜山路889号3号楼 邮编: 200233

t E&E (86-21) 61402553 f E&E (86-21) 64953679 www.sgs.com.cn
t HL (86-21) 61402594 f HL (86-21) 61156899 e sgs.china@sgs.com