

20180701 241271 0 595.32 841.995.32 341.92 595.32 341.92 10.02 1 538.68 684.8

Analyzed by: *Cindy Ma* Checked by:

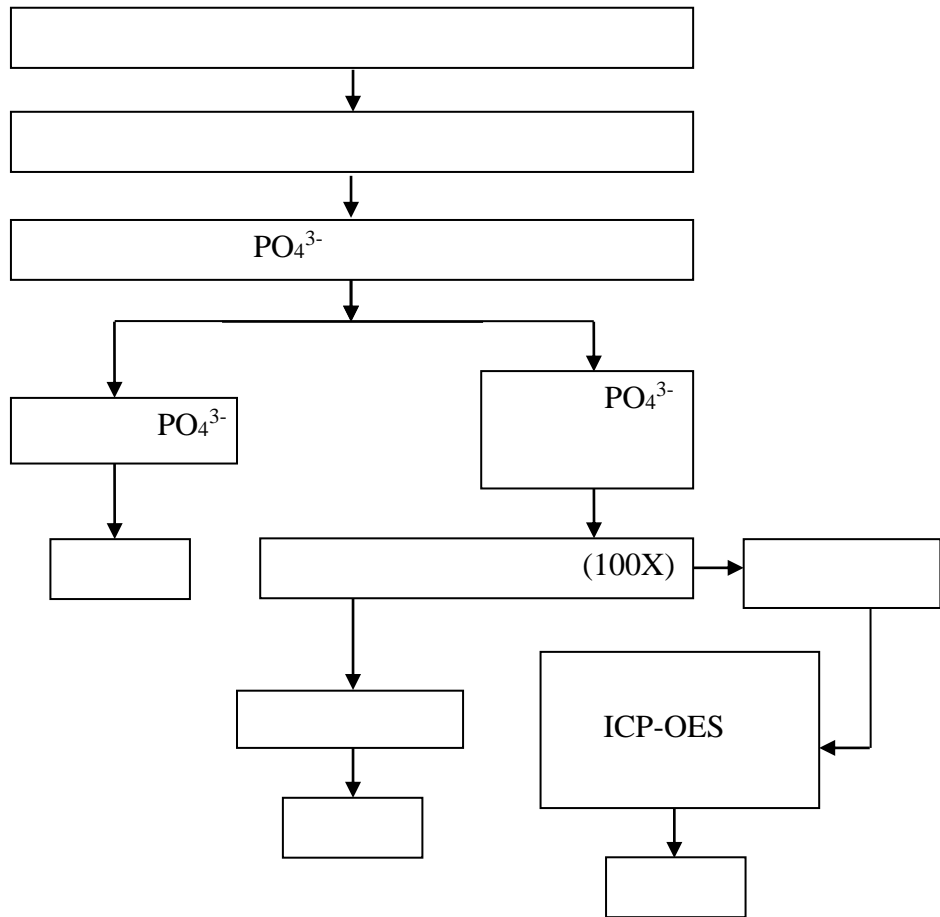
20180703041400

:

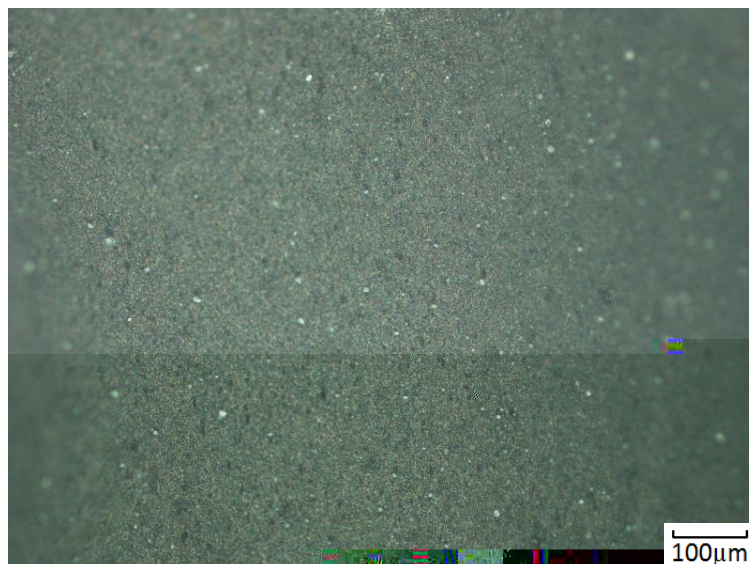
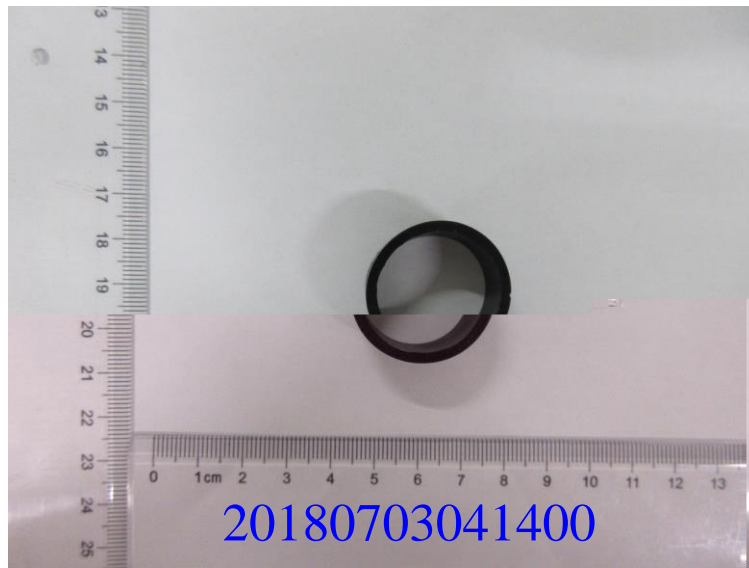
(1) EPA6010C-2007; ICP-OES

		MDL	
(Red Phosphorus)	mg/kg	500	ND

Red Phosphorus



20180703041400



20180703041400